



Model F1 56 Model F1 56 Recessed Standard Response Sprinklers

Model F1 56 Sprinkler

Standard Pendent

Model F1 56 Recessed Sprinkler Types

Recessed Pendent/F1 and F2

Recessed Pendent/FP

Corrosion Resistant (UL, ULC) Polyester Coated

Listings & Approvals

1. Listed by Underwriters Laboratories, Inc. (UL)
2. Listed by Underwriters' Laboratories of Canada (ULC)
3. Certified by FM Approvals

UL Listing Category

Sprinklers, Automatic & Open

UL Guide Number

VNIV

Product Description

The F1 56 Glass Bulb Sprinkler combines the durability of a standard sprinkler with the attractive low profile of a decorative sprinkler. Whether installed on exposed piping or in an office ceiling, it is functional and attractive.

Beautifully versatile is the description for the Reliable Model F1 56 Recessed glass bulb sprinkler. Recessing the F1 56 enhances its already low profile decorative appearance, and facilitates a rapid and perfect installation.

Model F1 56 Recessed escutcheon is highly adjustable. The two piece construction makes field installation a very easy and rapid task. This also allows ceiling panels to later be removed without shutting down the fire protection system, thus facilitating maintenance of above ceiling services.

The F1 56 Automatic Sprinkler utilizes a frangible glass bulb. The glass bulb consists of an accurately controlled amount of special fluid hermetically sealed inside of a precisely manufactured glass capsule. This glass bulb is specially constructed to provide fast thermal response.

At normal temperatures, the glass bulb contains the fluid in both the liquid phase and in the vapor phase. The vapor phase can be seen as a small bubble. As heat is applied, the liquid expands forcing the bubble smaller and smaller as the liquid pressure increases. Continued heating forces the liquid to push out against the bulb, causing the glass to shatter, opening the waterway and allowing the deflector to distribute the discharging water.

The F1 56 Sprinkler temperature rating is identified by the color of the glass bulb capsule as well as frame color where applicable.



Pendent



Recessed Pendent/F1



Recessed Pendent/FP

Model F1 56 Pendent Sprinkler
Installation Wrench: Model D Sprinkler Wrench
Installation Data:

Sprinkler Type Standard-Pendent (SSP) Deflectors Marked to Indicate Position	K Factor		Sprinkler Height	Approval Organizations	Sprinkler Identification Number (SIN)
	US	Metric			
1/2" (15mm) Standard Orifice with 1/2" NPT (R1/2) Thread	5.6	80	2.25" (57mm)	1,2,3	RA1314

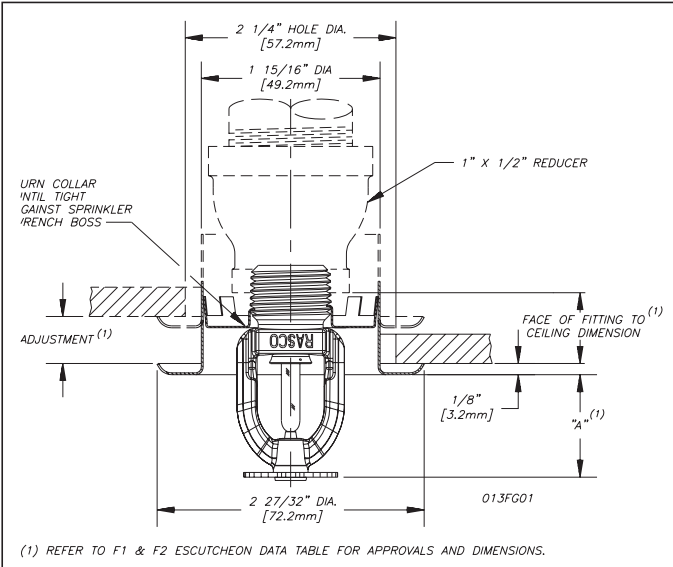


Pendent

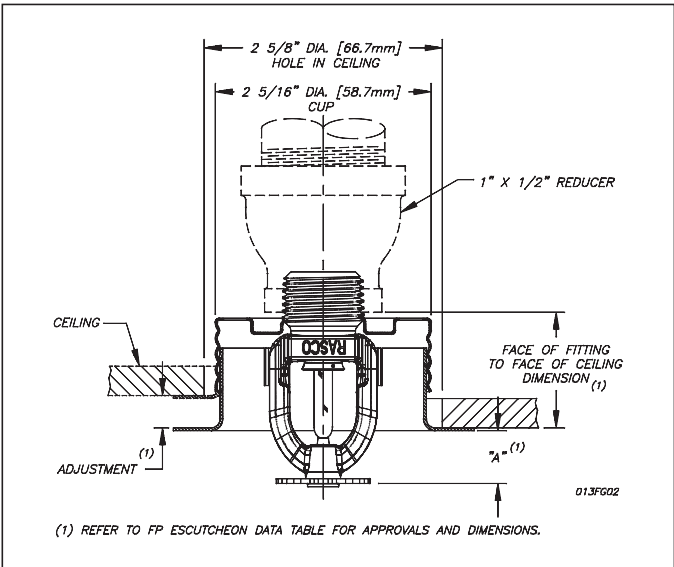
Model F1 56 Recessed Pendent Sprinkler
Installation Wrench: Model GFR2 Sprinkler Wrench
Installation Data:

Nominal Orifice	Thread Size	K Factor		Sprinkler Height	Approval Organizations	Sprinkler Identification Number (SIN)
		US	Metric			
1/2" (15mm)	1/2" NPT (R1/2)	5.6	80	2.25" (57mm)	1,2,3 ⁽²⁾	RA1314

- (2) FM Approval
- Light Hazard - No Limitations
 - Ordinary Hazard - Groups 1 & 2, Wet Systems only.



Model F1 56/F1 or F2



Model F1 56/FP

Model F1 56 & F1 56 Recessed Sprinklers

Application

Model F1 56 and F1 56 Recessed sprinklers are used in fixed fire protection systems: Wet, Dry, Deluge or Preaction. Care must be exercised that the orifice size, temperature rating, deflector style and sprinkler type are in accordance with the latest published standards of the National Fire Protection Association or the approving Authority Having Jurisdiction Installation.

Installation

Model F1 56 sprinklers are standard response sprinklers intended for installation as specified in NFPA 13. They must also be installed with the Model D Sprinkler Wrench specifically designed by Reliable for use with these sprinklers.

The Model F1 56 Recessed Sprinklers are to be installed with a maximum recess of $\frac{3}{4}$ inch (19mm). The Model F1 56 Escutcheon illustrated is the only recessed escutcheon to be used with the Model F1 56 Pendent Sprinklers. The use of any other recessed escutcheon will void all approvals and negate all warranties. When installing Model F1 56 Recessed Pendent use the Model GFR2 Sprinkler Wrench. Any other type of wrench may damage these sprinklers.

Note: A leak tight $\frac{1}{2}$ " NPT (R1/2) sprinkler joint can be obtained with a torque of 8-18 ft-lbs (10,8 - 24,4 N-m). Do not tighten sprinklers over maximum recommended torque. It may cause leakage or impairment of the sprinklers.

Glass bulb sprinklers have orange covers to protect the bulb during the installation process. REMOVE THIS PROTECTION ONLY AFTER THE SYSTEM HAS BEEN HYDROSTATICALLY TESTED AND, WHEN APPLICABLE, THE ESCUTCHEONS HAVE BEEN INSTALLED. RASCO wrenches are designed to install sprinklers when covers are in place.

Ordering Information

Specify:

1. Sprinkler Model
2. Sprinkler Type
3. Orifice Size
4. Deflector Type
5. Temperature Rating:
 - Specify Bulb Size when ordering
 - Model F1 EC HSW Sprinkler
6. Sprinkler Finish
7. Escutcheon Finish (where applicable)

Note: When Model F1FR 56 Recessed Sprinklers are ordered, the sprinklers and escutcheons are packaged separately.

Escutcheon Data

Escutcheon Model	Approvals	Adjustment	"A" Dimension	Face of Fitting to Ceiling or Wall Dimension
F1	1, 2	Max Recessed Min Recessed	$1\frac{1}{2}$ " (38.1mm) $\frac{3}{4}$ " (19.1mm)	$\frac{3}{16}$ " - $\frac{1}{16}$ " (5mm - 24mm)
F2	1, 2, 3	Max Recessed Min Recessed	$1\frac{1}{2}$ " (38.1mm) 1" (25mm)	$\frac{3}{16}$ " - $\frac{1}{16}$ " (5mm - 24mm)
FP Push-on/ Thread-off	1, 2	Max Recessed	$\frac{7}{16}$ " (11mm)	$1\frac{1}{2}$ " (38.1mm)
	1, 2	Min Recessed	$\frac{15}{16}$ " (24mm)	1" (25mm)

No Dimensional Figure for FP

Maintenance

The Models F1 56 and F1 56 Recessed Sprinklers should be inspected quarterly and the sprinkler system maintained in accordance with NFPA 25. Do not clean sprinklers with soap and water, ammonia or any other cleaning fluid. Remove any sprinkler which has been painted (other than factory applied) or damaged in any way. A stock of spare sprinklers should be maintained to allow quick replacement of damaged or operated sprinklers. Prior to installation, sprinklers should be maintained in the original cartons and packaging until used to minimize the potential for damage to sprinklers that would cause improper operation or non-operation.

Temperature Ratings

Classification	Sprinkler Temperature		Max. Ambient Temp.	Bulb Color
	°C	°F		
Ordinary	57	135	100°F (38°C)	Orange
Ordinary	68	155	100°F (38°C)	Red
Intermediate	79	175	150°F (66°C)	Yellow
Intermediate	93	200	150°F (66°C)	Green
High ⁽¹⁾	141	286	225°F (107°C)	Blue
Extra High ⁽¹⁾	182	360	300°F (149°C)	Mauve

⁽¹⁾ Not available for F1 Recessed.

Finish

Sprinkler	Escutcheon
White Polyester Coated ⁽¹⁾⁽²⁾	White Painted

⁽¹⁾ UL, ULC and FM approved. UL and ULC listed corrosion resistant sprinkler.

⁽²⁾ FP Push on-thread off escutcheon.

Reliable . . . For Complete Protection

Reliable offers a wide selection of sprinkler components. Following are some of the many precision-made Reliable products that guard life and property from fire around the clock.

- Automatic sprinklers
- Flush automatic sprinklers
- Recessed automatic sprinklers
- Concealed automatic sprinklers
- Adjustable automatic sprinklers
- Dry automatic sprinklers
- Intermediate level sprinklers
- Open sprinklers
- Spray nozzles
- Alarm valves
- Retarding chambers
- Dry pipe valves
- Accelerators for dry pipe valves
- Mechanical sprinkler alarms
- Electrical sprinkler alarm switches
- Water flow detectors
- Deluge valves
- Detector check valves
- Check valves
- Supertrol electrical system
- Sprinkler emergency cabinets
- Sprinkler wrenches
- Sprinkler escutcheons and guards
- Inspectors test connections
- Sight drains
- Ball drips and drum drips
- Control valve seals
- Air maintenance devices
- Air compressors
- Pressure gauges
- Identification signs
- Fire department connections

The equipment presented in this bulletin is to be installed in accordance with the latest pertinent Standards of the National Fire Protection Association, Factory Mutual Research Corporation, or other similar organizations and also with the provisions of governmental codes or ordinances whenever applicable.

Products manufactured and distributed by Reliable have been protecting life and property for over 80 years, and are installed and serviced by the most highly qualified and reputable sprinkler contractors located throughout the United States, Canada and foreign countries.

Manufactured by



The Reliable Automatic Sprinkler Co., Inc.

(800) 431-1588
(800) 848-6051
(914) 829-2042
www.reliablesprinkler.com

Sales Offices
Sales Fax
Corporate Offices
Internet Address



Revision lines indicate updated or new data

EG. Printed in U.S.A. 8/07

P/N9999970299