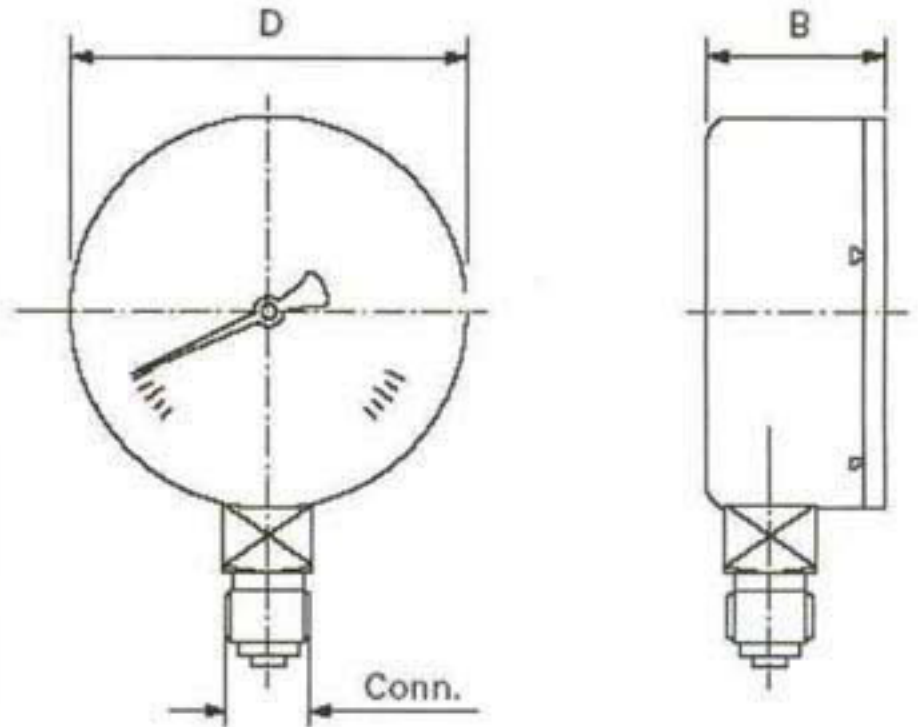


## Pressure Gauges Data Sheet



Part No.	Connection	Scale Range	Type	Material / Finish	Ø D (mm)	B (mm)	Weight (kg)	Approvals
GAU00310-16100GLY	3/8" BSP	0 – 16 bar	Glycerine Filled	St. Steel	100	36	0.6	
GAU0031COMGLY100	3.8" BSP	-1 - +3 bar	Glycerine Filled	St. Steel	100	36	0.6	
GAU00310-25100GLY	3/8" BSP	0 – 25 bar	Glycerine Filled	St. Steel	100	36	0.6	

We can also provide a No-Loss Connector and washer to suit all of the above gauges. Our Part Number for this is GAU0031CONNECT

Other types are available on request; please contact our sales office for details.

### Additional Available Options:-

- Gauges can be supplied with your companies logo (subject to quantity required).
- Independent Calibration Certificates are available (at extra cost) if required.