

# The Kennedy Guardian

Fire hydrants have been used in fire protection for over 100 years. A.W.W.A. C502 was developed in 1913 as a standard for the manufacture and use of dry barrel hydrants. Kennedy has established itself as a leader in the industry with manufacturing experience dating back to 1905. Many of the early hydrants are in use today.

Kennedy's most recent design is the Guardian. Based on a simple design, it is easy to install, maintain and repair. The Guardian sets a standard for quality in the industry and meets or exceeds all requirements for A.W.W.A. C502 latest revision, and is UL listed and FM approved.

K81D Meets or exceeds requirements of A.W.W.A. C-502 and is UL listed and FM approved.

K-81A Meets or exceeds requirements of A.W.W.A. C-502.

## Guardian Features

**Fig. K81D**

**Weather Shield**  
To protect exposed operating area from freezing rain and dirt.

**Thrust Washer**  
For easy turning operation.

**Two O-Rings**  
To protect operating threads from corrosion.

**O-Ring**  
To seal between brass ferrule and stem.

**Nozzle**  
Tamper resistant.

**Breakable Coupling**  
Minimizes damage from traffic accident. New design makes repairs more efficient.

**O-Ring**  
For ease of repair and nozzle facing.

**Easy to install—Even easier to maintain**

- **Tamper resistant** quarter turn hose and steamer nozzles. For those who know how, replacement is easy.
- **Easy to use**, short, simple, inexpensive and lightweight seat removal wrench.
- **Unique pressure-activated** drain valve assures positive shut off. The higher the pressure, the tighter the seal. Automatically compensates for wear due to usage. Does not rely on interference fit.
- **Two sizes available**, 5¼" valve opening and 4½" valve opening to best meet your needs.
- **Fully and easily lubricated** operating threads for corrosion protection and ease of operation.
- **The Guardian K-81D Hydrant** meets or exceeds all the latest provisions of AWWA, and UL 246-FM 1510 specifications (options are limited on UL/FM models)

**AWWA**  
400 psi test pressure  
200 psi working pressure

**ULFM**  
400 psi test pressure  
175 psi working pressure

**One Piece Bonnet**  
Newly designed for easier maintenance.

**Sealed Grease Cavity**  
For easier operation and maintenance.

**Traffic Flange**  
Full 360° adjustment. New Breaking Ring on top for easy replacement and interchangeability on all K-81 models.

**Corrosion Resistant**  
Bronze Drain Valve.

**Bronze to Bronze Seating**  
This standard feature assures easy seat removal.

**Full Cover Bottom Plate**  
Prevents corrosion to the lower stem threads and prevents main valve distortion. Provides a positive stop against the elbow.

# KENNEDY GUARDIAN K81D FIRE HYDRANT (4 1/2)

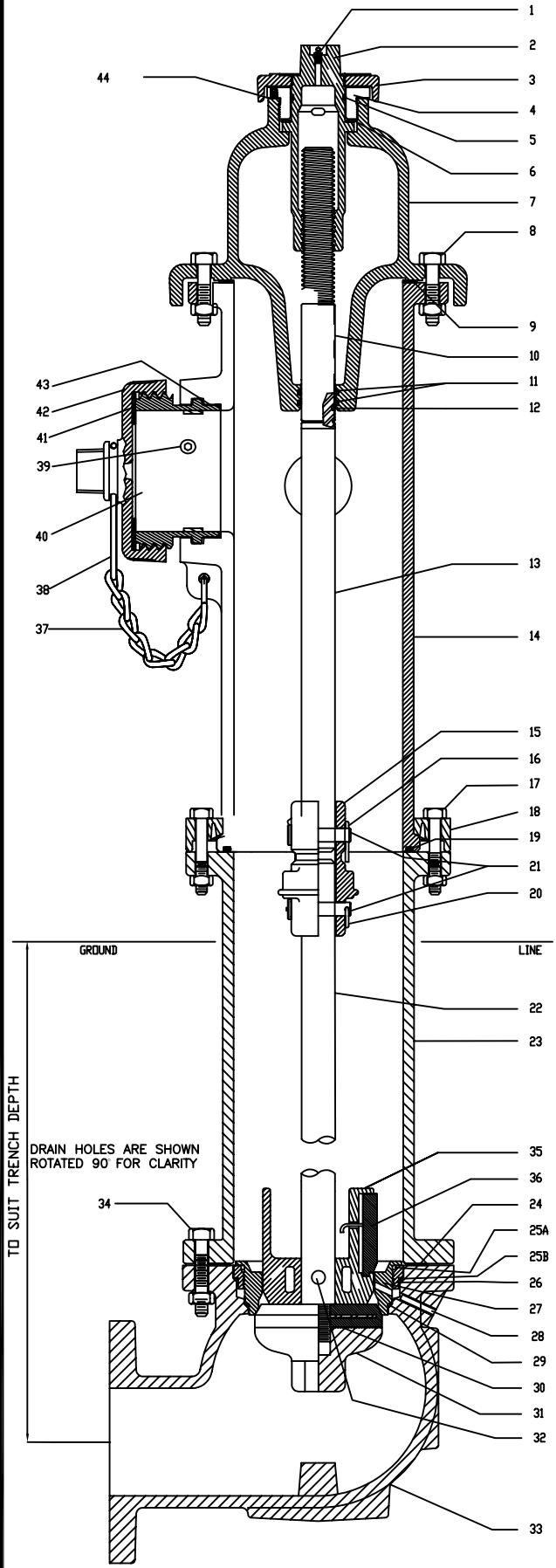
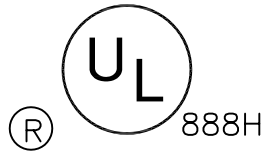
ITEM#	QTY	DESCRIPTION	MATERIAL
1	1	ALEMITE FITTING	STAINLESS STEEL A276 (304)
2	1	OPERATING STEM NUT	BRONZE B584 CB4400
3	1	DIRT SHIELD	CAST IRON A126 CLASS B
4	1	STEM LOCK NUT	BRONZE B584 CB4400
5	1	O-RING	BUNA-N D20000
6	1	THRUST WASHER	NYLATRON GS
7	1	HYDRANT CAP	CAST IRON A126 CLASS B
8	6	CAP BOLTS & NUTS	ZINC PLATED STEEL
9	1	CAP GASKET	CLOTH INSERTED RUBBER D2000
10	1	STEM FERRULE	NAVAL BRASS B21-CDA 464
11	2	DOME O-RING	BUNA-N D20000
12	1	UPPER ROD O-RING	BUNA-N D20000
13	1	UPPER STEM	H.R. STEEL A588
14	1	UPPER BARREL	CAST IRON A126 CLASS B
15	1	STEM BREAKING COUPLING	CAST IRON A126 CLASS B
16	2	COTTER PIN	STAINLESS STEEL A276 (18-8)
17	8	BOLTS & NUTS	ZINC PLATED STEEL
18	2	BREAKING RING	CAST IRON A126 CLASS B
19	1	O-RING	BUNA-N D20000
20	2	BRIDGE PIN	STAINLESS STEEL A276 (18-8)
21	2	CLEVIS PIN(S)	STAINLESS STEEL A276 (18-8)
22	1	LOWER STEM	HR STEEL A588
23	1	LOWER BARREL	DUCTILE IRON ANSI 21.50, 21.51
24	1	ELBOW GASKET	CELLULOSE FIBER
25	1	UPPER O-RING	BUNA-N D20000
26	1	SEAT RING INSERT	BRONZE B584 CB4400
27	1	SEAT RING	BRONZE B584 CB4400
28	1	DRAIN TUBE	NAVAL BRASS B21-CDA 464
29	1	LOWER O-RING	BUNA-N D20000
30	1	MAIN VALVE	NEOPRENE WITH STEEL INSERT
31	1	BOTTOM PLATE	CAST IRON A126 CLASS B
32	1	DRAIN VALVE PIN	CAD PLATED STEEL
33	1	ELBOW	CAST IRON A126 CLASS B
34	8	ELBOW BOLTS & NUTS	ZINC PLATED STEEL
35	1	DRAIN VALVE	BRONZE B584 CB4400
36	1	DRAIN VALVE FACING W/INSERT	BUNA-N W/STAINLESS STEEL
37	*	NOZZLE CAP CHAIN	STEEL A108
38	1	NOZZLE CHAIN BAND	STEEL A108
39	*	PUMPER NOZZLE RETAINING SCREW	STAINLESS STEEL A276 (304)
40	1	NOZZLE	BRONZE B584 CB4400
41	1	NOZZLE CAP GASKET	RUBBER D20000 TYPE AA
42	1	NOZZLE CAP	CAST IRON A126 CLASS B
43	1	PUMPER O-RING	BUNA-N D20000
44	1	HOLD DOWN NUT SET SCREW	STAINLESS STEEL A276 (410)

\* VARIES

MEETS OR EXCEEDS AWWA C502

250 PSI WORKING PRESSURE AWWA  
 200 PSI WORKING PRESSURE UL/FM  
 500 PSI HYDROSTATIC TEST PRESSURE

LISTED



KENNEDY VALVE ELMIRA, NEW YORK A DIVISION OF MCWANE INC.		DWN: TRIJ
		DATE: 7/1/05
		DWG. NO. FH-129

